

PERCEPCIÓN SENSIBLE

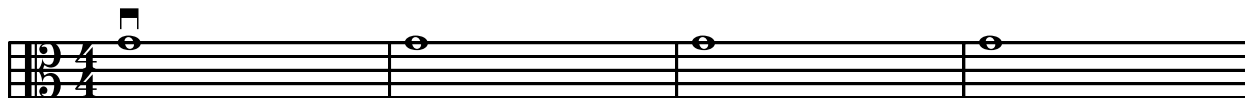
Viola

"Nihil est in intellectu quod prius non fuerit in sensu"

Jesús Fdez. Vizcaíno

Cuadro 1

Largo ♩ = 54



p

cresc. - - - poco a poco



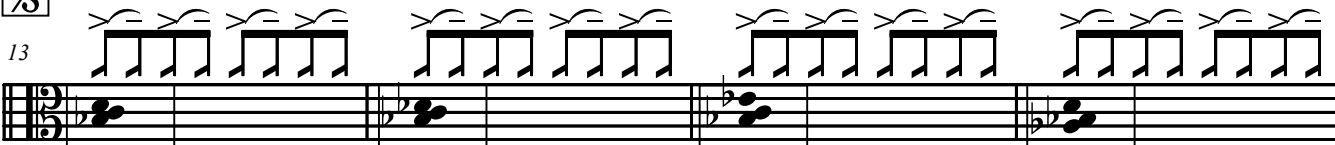
mf

cresc. sempre - - - poco a poco

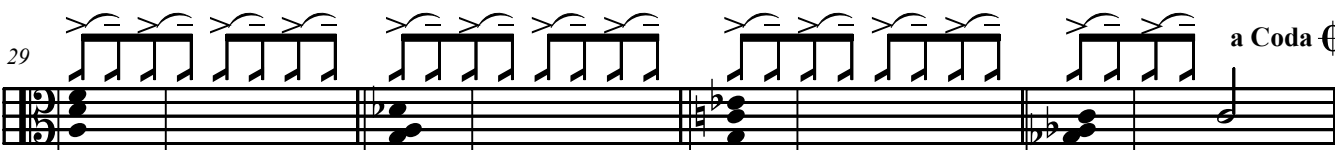
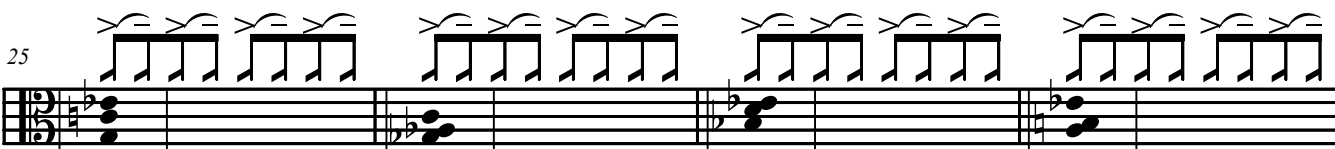
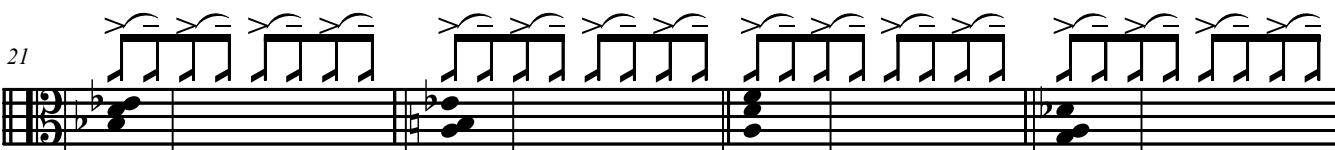
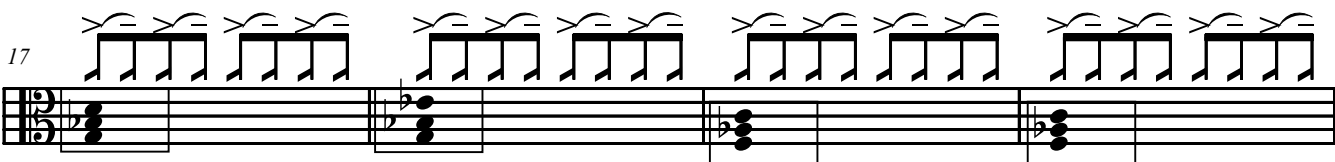


f

Moderato (♩ = c. 120) Cuadros 2 y 6



mf



a Coda ⊕

X3 Cuadros 3,4 y 5

33 **Grupo mp**

mp X 8^{va}

37

41

45 **Solo f (1ª Rep)**

49

1, 2.

3. **D.S. a la Coda** **Coda** Cuadro 7

53 **Largo** ♩ = 54

loco p *cresc. - - - poco a poco*

58

mf *cresc. sempre - - - poco a poco*

62

rit *f* *sfz* *f*